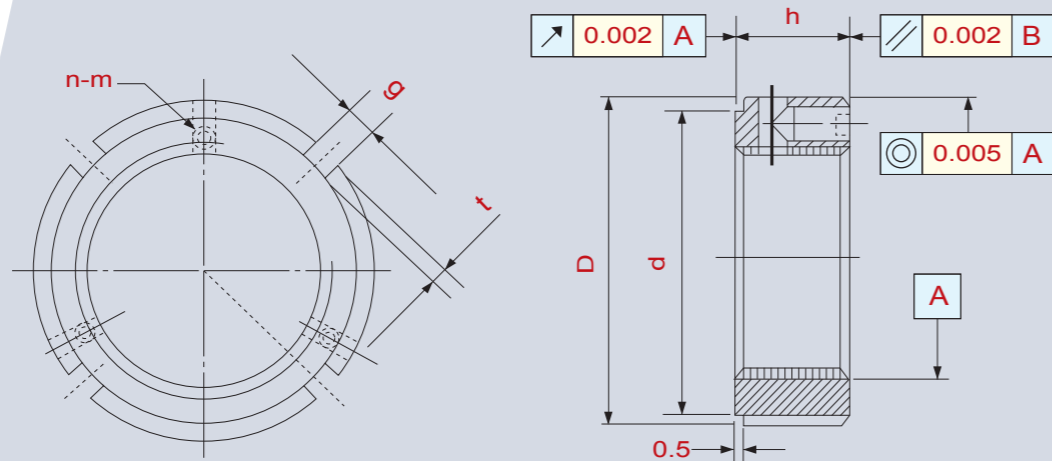


SGL-A Axial Locking

This locknut employs 3 way axial locking with the same thickness as the SGL-F series. 3 way axial locking is especially applicable to assembly work within special space constraints.

Locknut threads, clamping rim, trailing rim, and outer skirt are precision ground to conform to high precision requirements during high rpms.

- Material Composition: SCM440(42CrMo4)
- Thread Precision: ISO 4H
- Run Out: 0.002mm
- Hardness: HRC 28° ~ 32°
- Parallelism: 0.002mm
- Concentricity: 0.005mm



SGL-A

Thread	D	h	g	t	d	n - m	MAX. Nm	Thread	D	h	g	t	d	n - m	MAX. Nm
SGL-A M14 x 1.5	30	14	4	2	25	2 - M4	3.5	SGL-A M68 x 2	92	24	8	3.5	84	3 - M8	18.0
SGL-A M15 x 1	30	14	4	2	25	2 - M4	3.5	SGL-A M70 x 2	92	24	8	3.5	84	3 - M8	18.0
SGL-A M16 x 1.5	30	14	4	2	25	2 - M4	3.5	SGL-A M72 x 2	94	24	8	3.5	86	3 - M8	18.0
SGL-A M17 x 1	32	16	4	2	27	2 - M4	3.5	SGL-A M75 x 2	98	24	8	3.5	90	3 - M8	18.0
SGL-A M18 x 1.5	32	16	4	2	27	3 - M4	3.5	SGL-A M76 x 2	98	24	8	3.5	90	3 - M8	18.0
SGL-A M20 x 1	38	16	4	2	33	3 - M4	3.5	SGL-A M80 x 2	105	24	8	3.5	96	3 - M8	18.0
SGL-A M20 x 1.5	38	16	4	2	33	3 - M4	3.5	SGL-A M85 x 2	110	24	8	3.5	102	3 - M8	18.0
SGL-A M22 x 1.5	38	16	4	2	33	3 - M4	3.5	SGL-A M90 x 2	120	26	10	4	108	3 - M8	18.0
SGL-A M24 x 1.5	38	18	5	2	33	3 - M4	3.5	SGL-A M95 x 2	125	26	10	4	113	3 - M8	18.0
SGL-A M25 x 1.5	38	18	5	2	33	3 - M4	3.5	SGL-A M100 x 2	130	26	10	4	118	3 - M8	18.0
SGL-A M27 x 1.5	40	18	5	2	35	3 - M4	3.5	SGL-A M105 x 2	140	28	12	5	125	3 - M8	18.0
SGL-A M30 x 1.5	45	18	5	2	40	3 - M4	3.5	SGL-A M110 x 2	145	28	12	5	132	3 - M8	18.0
SGL-A M33 x 1.5	50	18	5	2	45	3 - M4	3.5	SGL-A M115 x 2	150	28	12	5	137	3 - M8	18.0
SGL-A M35 x 1.5	52	18	5	2	47	3 - M6	8.0	SGL-A M120 x 2	155	30	12	5	142	3 - M8	18.0
SGL-A M36 x 1.5	52	18	5	2	47	3 - M6	8.0	SGL-A M125 x 2	160	30	12	5	147	3 - M8	18.0
SGL-A M39 x 1.5	58	20	6	2.5	52	3 - M6	8.0	SGL-A M130 x 2	165	30	12	5	152	3 - M8	18.0
SGL-A M40 x 1.5	58	20	6	2.5	52	3 - M6	8.0	SGL-A M135 x 2	175	32	14	6	160	3 - M10	35.0
SGL-A M42 x 1.5	62	20	6	2.5	56	3 - M6	8.0	SGL-A M140 x 2	180	32	14	6	165	3 - M10	35.0
SGL-A M45 x 1.5	65	20	6	2.5	59	3 - M6	8.0	SGL-A M145 x 2	190	32	14	6	175	3 - M10	35.0
SGL-A M48 x 1.5	70	20	6	2.5	64	3 - M6	8.0	SGL-A M150 x 2	195	32	14	6	180	3 - M10	35.0
SGL-A M50 x 1.5	70	20	6	2.5	64	3 - M6	8.0	SGL-A M155 x 3	200	34	16	7	180	3 - M10	35.0
SGL-A M52 x 1.5	73	22	7	3	66	3 - M6	8.0	SGL-A M160 x 3	210	34	16	7	190	3 - M10	35.0
SGL-A M55 x 2	75	22	7	3	68	3 - M6	8.0	SGL-A M165 x 3	210	34	16	7	190	3 - M10	35.0
SGL-A M56 x 2	75	22	7	3	68	3 - M6	8.0	SGL-A M170 x 3	220	34	16	7	200	3 - M10	35.0
SGL-A M60 x 2	80	22	7	3	73	3 - M6	8.0	SGL-A M180 x 3	230	36	18	8	205	3 - M12	60.0
SGL-A M64 x 2	85	22	7	3	78	3 - M6	8.0	SGL-A M190 x 3	240	36	18	8	215	3 - M12	60.0
SGL-A M65 x 2	85	22	7	3	78	3 - M6	8.0	SGL-A M200 x 3	250	38	18	8	225	3 - M12	60.0