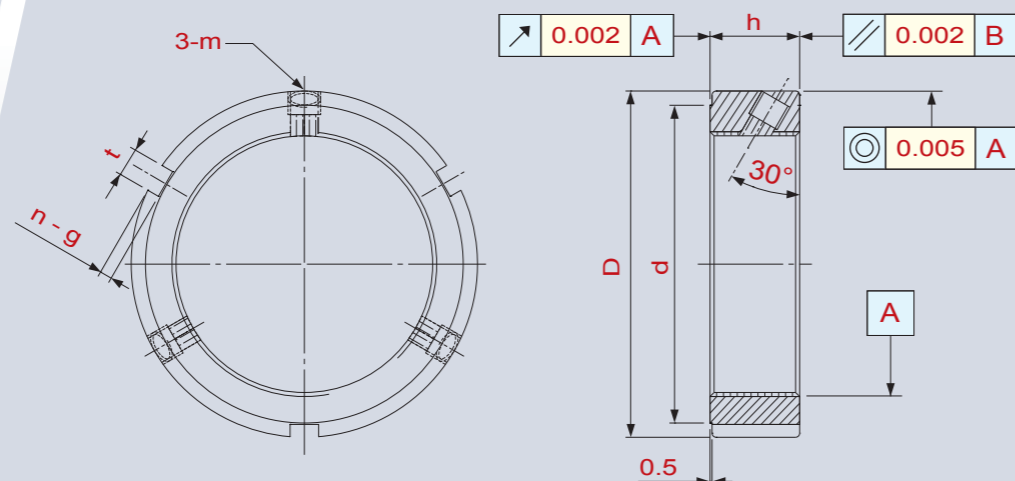
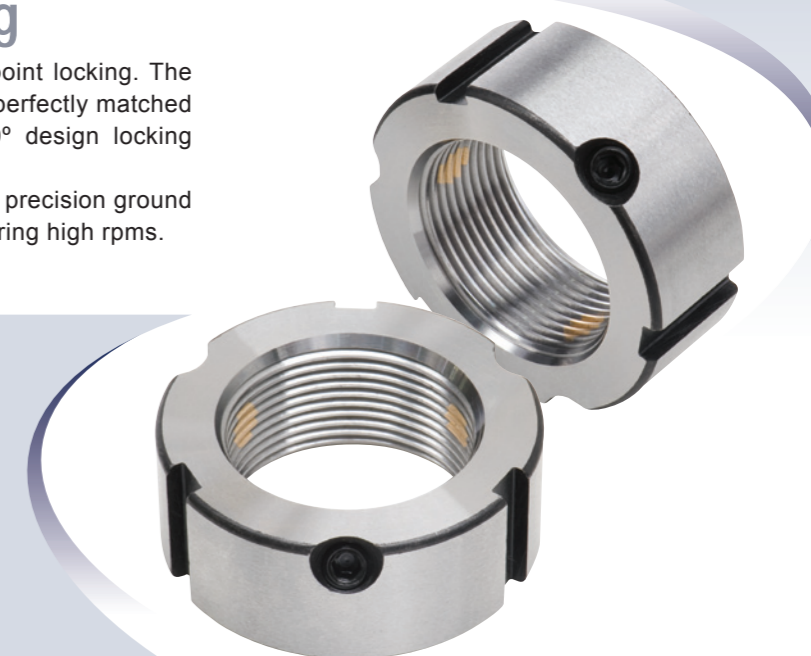


## SGL-F Flank Locking

The SGL-F Series locknuts employ 30°, 3 point locking. The outstanding design of the brass threads are perfectly matched and prevent any loosening whatsoever. 30° design locking screws also reduce torque on this product.

Clamping rim, trailing rim, and outer skirt are precision ground to conform to high precision requirements during high rpms.

- Material Composition: SCM440(42CrMo4)
- Thread Precision: ISO 4H
- Run Out: 0.002mm
- Hardness: HRC 28° ~ 32°
- Parallelism: 0.002mm
- Concentricity: 0.005mm



SGL-F

Thread	D	h	d	n - t x g	m	MAX. Nm	Thread	D	h	d	n - t x g	m	MAX. Nm
SGL-F M14 x 1.5	30	14	25	3-4 x 2	M5	4.5	SGL-F M68 x 2	92	24	84	3-8 x 3.5	M8	18.0
SGL-F M15 x 1	30	14	25	3-4 x 2	M5	4.5	SGL-F M70 x 2	92	24	84	3-8 x 3.5	M8	18.0
SGL-F M16 x 1.5	30	14	25	3-4 x 2	M5	4.5	SGL-F M72 x 2	94	24	86	3-8 x 3.5	M8	18.0
SGL-F M17 x 1	32	16	27	3-4 x 2	M5	4.5	SGL-F M75 x 2	98	24	90	3-8 x 3.5	M8	18.0
SGL-F M18 x 1.5	32	16	27	3-4 x 2	M5	4.5	SGL-F M76 x 2	98	24	90	3-8 x 3.5	M8	18.0
SGL-F M20 x 1	38	16	33	3-4 x 2	M6	4.5	SGL-F M80 x 2	105	24	96	3-8 x 3.5	M8	18.0
SGL-F M20 x 1.5	38	16	33	3-4 x 2	M6	8.0	SGL-F M85 x 2	110	24	102	6-8 x 3.5	M8	18.0
SGL-F M22 x 1.5	38	16	33	3-4 x 2	M6	8.0	SGL-F M90 x 2	120	26	108	6-10 x 4	M8	18.0
SGL-F M24 x 1.5	38	18	33	3-5 x 2	M6	8.0	SGL-F M95 x 2	125	26	113	6-10 x 4	M8	18.0
SGL-F M25 x 1.5	38	18	33	3-5 x 2	M6	8.0	SGL-F M100 x 2	130	26	118	6-10 x 4	M8	18.0
SGL-F M27 x 1.5	40	18	35	3-5 x 2	M6	8.0	SGL-F M105 x 2	140	28	125	6-10 x 4	M10	35.0
SGL-F M30 x 1.5	45	18	40	3-5 x 2	M6	8.0	SGL-F M110 x 2	145	28	132	6-10 x 4	M10	35.0
SGL-F M33 x 1.5	50	18	45	3-5 x 2	M6	8.0	SGL-F M115 x 2	150	28	137	6-10 x 4	M10	35.0
SGL-F M35 x 1.5	52	18	47	3-5 x 2	M8	18.0	SGL-F M120 x 2	155	30	142	6-12 x 5	M10	35.0
SGL-F M36 x 1.5	52	18	47	3-5 x 2	M8	18.0	SGL-F M125 x 2	160	30	147	6-12 x 5	M10	35.0
SGL-F M39 x 1.5	58	20	52	3-6 x 2.5	M8	18.0	SGL-F M130 x 2	165	30	152	6-12 x 5	M10	35.0
SGL-F M40 x 1.5	58	20	52	3-6 x 2.5	M8	18.0	SGL-F M135 x 2	175	32	160	6-12 x 5	M10	35.0
SGL-F M42 x 1.5	62	20	56	3-6 x 2.5	M8	18.0	SGL-F M140 x 2	180	32	165	6-12 x 5	M10	35.0
SGL-F M45 x 1.5	65	20	59	3-6 x 2.5	M8	18.0	SGL-F M145 x 2	190	32	175	6-12 x 5	M10	35.0
SGL-F M48 x 1.5	70	20	64	3-6 x 2.5	M8	18.0	SGL-F M150 x 2	195	32	180	6-12 x 5	M10	35.0
SGL-F M50 x 1.5	70	20	64	3-6 x 2.5	M8	18.0	SGL-F M155 x 3	200	34	180	6-14 x 6	M10	35.0
SGL-F M52 x 1.5	73	22	66	3-7 x 3	M8	18.0	SGL-F M160 x 3	210	34	190	6-14 x 6	M10	35.0
SGL-F M55 x 2	75	22	68	3-7 x 3	M8	18.0	SGL-F M165 x 3	210	34	190	6-14 x 6	M10	35.0
SGL-F M56 x 2	75	22	68	3-7 x 3	M8	18.0	SGL-F M170 x 3	220	34	200	6-14 x 6	M10	35.0
SGL-F M60 x 2	80	22	73	3-7 x 3	M8	18.0	SGL-F M180 x 3	230	36	205	6-16 x 7	M12	60.0
SGL-F M64 x 2	85	22	78	3-7 x 3	M8	18.0	SGL-F M190 x 3	240	36	215	6-16 x 7	M12	60.0
SGL-F M65 x 2	85	22	78	3-7 x 3	M8	18.0	SGL-F M200 x 3	250	38	225	6-16 x 7	M12	60.0